

# Actividentity SecureLogin

➤ Secure enterprise single sign-on

## Streamline access to corporate systems

Protect your network and corporate information with Actividentity SecureLogin. Reduce the impact of identity proliferation by providing users with a single identity — seamlessly creating, issuing, managing, and maintaining the linked credentials. By removing credential management from users and enforcing strict security policies, SecureLogin enhances network security, improves employee productivity, assists with legislative compliance, and drives down operational costs.

### Key features

#### Solve credential management issues

- Provide users with a single identity for streamlined access to linked systems.
- Optional password storage on smart card capability.

#### Strengthen network security

- Achieve strict authentication requirements at the application level.

- Integrate with Actividentity strong authentication solutions.
- Optional user data store encryption using PKI based credentials from smart card.
- Generate One Time Passwords.
- Optional use of AES cryptographic algorithm to encrypt user's data store.
- Guard against phishing attacks.

#### Centralize user account management

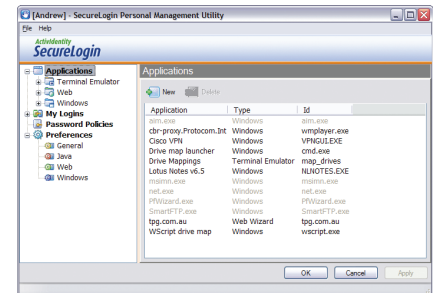
- Manage users' accounts from a central location in the directory.
- Distribute policies across user groups using group policy support.

#### Meet legislative requirements

- Assist with realizing proof-of-identity, enforced access rights and auditability.

#### Deploy seamlessly into existing identity management architectures

- Deploy into existing directory identity repositories—no additional infrastructure costs.
- Interoperate with user provisioning systems for streamlined identity management.
- Integrate with out-of-the-box and in-house applications.



## Benefits

### Strict credential management

Enforce strict policy for creating, using and maintaining credentials.

### Strong proof of identity

Require smart card, token or biometric authentication at network and application levels.

### Protect access to data

Enforce assigned access rights and audit user authentication activity.

### Faster and easier logins

Provide users with rapid access to applications without the hassle of account lockouts and expired passwords.

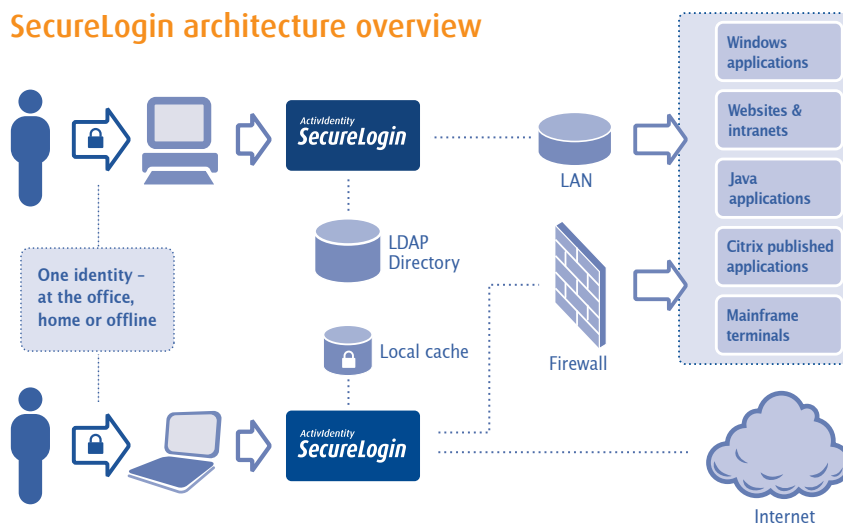
### Enhance users' productivity

Reduce the time users spend managing credentials and logging into corporate systems.

### Reduce help desk costs

Credentials resets account for up to 40% of help desk costs according to many leading analysts.

## SecureLogin architecture overview



## Directory support

- Microsoft Active Directory®
- Microsoft Active Directory Application Mode (ADAM)
- Novell® eDirectory™
- LDAP compliant directories

## Servers

- Microsoft® Windows® Server 2003
- Microsoft Windows 2000 Server SP 4
- Microsoft Windows 2000 Terminal Server

## Provisioning system support

- IBM Tivoli Identity Manager
- Novell® Identity Manager

## Clients

- Microsoft Windows XP
- Microsoft Windows 2000 Workstation SP4

## Browsers

- Internet Explorer 5.01 or later
- Mozilla Firefox 1.01 or later

## Citrix® support

- Citrix MetaFrame Presentation Server™
- Citrix MetaFrame XP™
- Citrix MetaFrame™ 1.8
- Published applications and desktops

## Management tools

- Microsoft Management Console (MMC)
- Active Directory Users and Computers snap-in
- SecureLogin Administrative Management Utility
- SecureLogin Personal Management Utility

## Single sign-on for Windows applications

Provides predefined sign-on to applications such as:

- AOL® Instant Messenger™
- BMC® Remedy® ARUser & Notifier
- Cerulean® Trillian
- Cisco® VPN
- Citrix Program Neighborhood & Agent
- Check Point® Firewall-1™
- Cyberview®
- Entrust® Client & Server
- ExcelCare Application
- Goldmine® v5.5

- Hornbill® SupportWorks
  - Lotus Notes® v5, v6.5 and Lotus Organizer® v4, v5
  - MEDITECH
  - Microsoft ActiveSync®
  - Microsoft Outlook Express®
  - Microsoft SQL Server
  - MSN® Messenger v4.5, v4.7, v5 & v6
  - Novell BorderManager® VPN Client
  - Novell Groupwise® Client & Notify
  - Novell iFolder®
  - Optima
  - Symantec PC Anywhere™ 8.0
  - SAP® 6.2
  - Targetfour HEAT Call Logging
  - Yahoo!® Messenger
- and many more

## Powerful web support

- Standard and framed web pages
- Complex forms and login pages
- Pages containing radio buttons and checkboxes
- Java AWT and SWING GUI applets and applications
- Web proxy servers

## Extensive terminal emulator support

Full support for more than 150 mainframe, UNIX®, ANSI® and custom terminal emulators including:

- Popular 3270 and 5250 emulators from Eicon®, WRQ®, Wall Data®, IBM®, NetManage®, Jolly Giant, Pericom® and many more
- Telnet emulators from WRQ, IBM, Microsoft, Novell and Tera Term
- Many healthcare emulators, including HBO, Meditech, Lawson® and 3M®
- Most ANSI and text-based emulators

## Security

- Protects credentials with triple DES encryption
- Optional use of AES cryptographic algorithm to encrypt user's data store
- Passphrase protection against unauthorized administrator access
- Optional password randomization
- Optional user data store encryption using PKI based credentials from smart card

- Optional password storage on smart card supports SNMP error and event monitoring
- Application layer of administration security in addition to directory-based ACL data security
- Built-in security prevents unauthorized access to user credentials
- Automated password randomization
- Supports login, password change, expiration and almost all application error conditions

## Deployment

- Distribution via Novell ZENworks®, IBM Tivoli, Microsoft SMS and CA® Unicenter®
- Attribute provisioning tool provides bulk import of user credentials from third party applications
- Import and export functions allow settings and data to move across different directories
- Digitally signed and encrypted XML files available for configuration distribution
- Supports Microsoft Group Policy Object for control over credential and application definition

To find out more about SecureLogin or register for a live product demonstration, visit our website

[www.actividentity.com](http://www.actividentity.com)

**Americas** +1 (510) 574 0100

**US Federal** +1 (571) 522 1000

**Europe** +33 (0) 1 42 04 84 00

**Asia Pacific** +61 (0) 2 6208 4888

**Email** [info@actividentity.com](mailto:info@actividentity.com)

**ActivIdentity™**