

# Actividentity ActivClient™

➤ Strong authentication, data security & digital signature

## Multi-factor, multi-application security

ActivClient™ is the market-leading smart card and USB token middleware from Actividentity that allows business and government organizations to easily use smart cards and USB tokens for a wide variety of desktop, network security and productivity applications. ActivClient enables usage of PKI certificates and keys, one-time passwords and static passwords on a smart card or USB token to secure desktop applications, network login, remote access, web login, e-mail and electronic transactions.

### Key features

#### Trusted identity and security services

- Consolidates multiple credentials and applications on a single, secure device.
- Enables strong authentication, non-repudiation, digital signatures, encryption and other services.
- Supports the latest security algorithms and standards.

#### Field-proven in demanding environments

- Next generation of ActivCard® Gold™, the world's leading smart card-based strong authentication software.
- Actividentity client software deployed on millions of desktops globally.

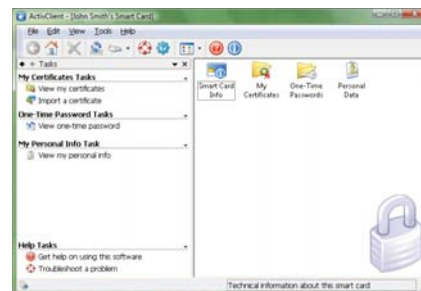
- Actividentity software adopted by leading businesses and governments around the world.

#### Maximum interoperability

- Supports standard government-issued smart cards such as CAC and PIV.
- Supports leading remote desktops and thin client solutions.
- Widest range of supported applications and PKI services for easy integration, even in complex IT environments.
- Supports the widest range of smart cards, readers and USB tokens.
- Standards-based architecture and available ActivClient SDK enable extensions and custom integrations.

#### Easy to deploy, use and maintain

- Optional automatic software update.
- Simple initialization tool for easy issuance and reset of smart cards and USB tokens.
- Optional deployment with ActivID™ Card Management System (CMS) for secure issuance and lifecycle management of devices and credentials.
- Customizable setup, 'silent' setup option and support for leading software 'push' solutions.
- Familiar interface with branding options.
- Strong security with an ATM-like user experience.
- Extensive troubleshooting, help desk diagnostic tools and wizards.



## Benefits

### Proven desktop security

Secures access to PCs and networks with smart cards and USB tokens to prevent unauthorized access.

### Secure and portable PKI

Allows digital certificates to be stored on secure devices improving the security and usability of digital signing and encryption applications including electronic forms and email.

### Strong authentication

Enables the use of smart cards and USB tokens to provide two-factor authentication for remote access, workstation and network access (wired and wireless), and application access.

### Secure Information & Transactions

Adds two-factor security for signed and encrypted emails, documents and transactions. Works with leading file encryption, disk encryption and boot protection solutions to protect data on laptop computers and other sensitive locations.

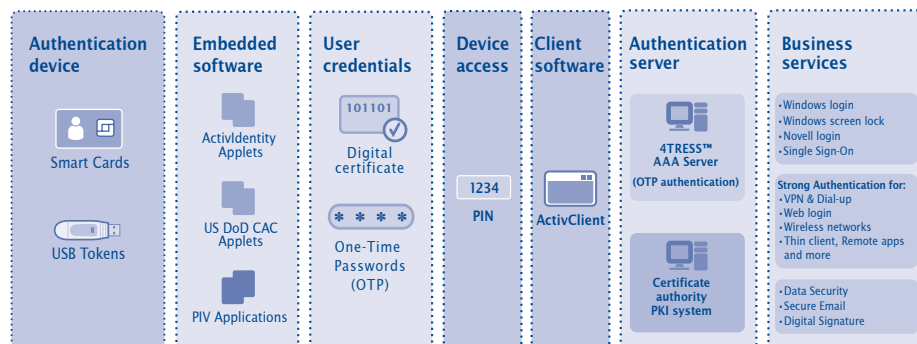
### Single Sign On services

Works with Actividentity SecureLogin to simplify the user authentication experience and dramatically reduce the costs associated with managing numerous enterprise passwords.

### Smart Employee ID

Workstation component of the Actividentity Smart Employee ID solution combining photo ID, physical access and IT security on a single smart card.

## Credentials and applications enabled by ActivClient



ActivClient supports a variety of credentials on multiple devices for flexible, strong authentication to PCs and networks as well as data security and digital signature.

## PKI services

- Windows® Smart Card Logon
- Novell® Login
- Secure dial-up/VPN with Check Point®, Cisco®, Microsoft® and Nortel® and many other remote access solutions
- Secure Web Login with Microsoft Internet Explorer®, Mozilla®, FireFox®, and Netscape®
- Secure Email (signature and encryption) with Microsoft Outlook® (automatic configuration), Thunderbird® and Netscape
- Support for Entrust® Entelligence™ Security Provider, Entrust Entelligence™ Desktop Solutions and Entrust® TruePass™
- Secure Documents through Digital Signature with Adobe® Acrobat® and Microsoft Office
- Secure Files through Microsoft Windows Vista Encrypting File System (EFS)
- Compatible with CyberTrust, Entrust, Microsoft, Red Hat®, VeriSign®, and other certificate authorities
- Pre-boot authentication, disk and file encryption with PointSec, SafeBoot®, WinMagic and more.

## One-time password services

- Secure dial-up/VPN with Check Point®, Cisco®, Microsoft® and Nortel® and many other remote access solutions
- Seamless SAA integration with Check Point SecuRemote/SecureClient
- Generate one-time password in a single click for easy login to any application
- Seamless integration with ActivIdentity SecureLogin® SSO for OTP single sign on

## Management services

- User console for end-users to view and manage their smart card and credentials
- Digital Certificates: Certificate viewer, import/export user and CA certificates
- Change PIN/unlock card
- Initialize/reset card
- Generate OTP in synchronous or challenge/response mode, re-synchronize event counter
- Remote and centralized post-issuance card updates via ActivID™ Card Management System

- View personal information for US DoD Common Access Cards and US Government Personal Identity Verification (PIV) cards

## Deployment services

- Configuration Manager: Software customization to companies' specific needs and security policies
- Troubleshooting and Advanced Diagnostics Wizards
- PKI services automatic configuration
- MSI-based installer, configurable to pre-select, add or hide modules
- Compatible with Microsoft Systems Management Server (SMS), Microsoft Active Directory Group Policy Object installation, and other software deployment technologies
- Automatic software updates
- Localizable product
- Support for Citrix® Presentation Server™ environment
- Support for Microsoft Terminal Server 2003 environments
- Resource Kit for customization and deployment technologies
- SDK for API-based integration

## Compliance with standards

- Smart Cards: ISO 7816
- Smart Card Operating System: Java™ Card 2.1 and 2.2
- Smart Card Readers: PC/SC
- Public Key Mechanisms: 1024- and 2048-bit RSA, X.509 certificates
- Public Key Cryptography (PKI): PKCS #7, 10, 11 and 12; Microsoft CAPI 2.0, SSL; S/MIME
- Symmetric Key Cryptography (SKI): DES, triple DES, ANSI X9.9
- US Government Smart Card Interoperability Specifications 2.1
- FIPS 201/PIV certified by NIST
- Compliant with US DoD CAC Middleware Requirement v3.0
- US General Services Administration (GSA) Basic Services Interface (BSI)
- Card Management: GlobalPlatform
- Section 508 compliant

## Compatibility

- ActivID™ Card Management System
- 4TRESS™ AAA Server
- ActivIdentity SecureLogin® SSO
- Smart Cards & USB tokens from ActivIdentity, Atmel®, Gemalto, Giesecke & Devrient, Oberthur, Keycorp, Sagem Orga
- Support for the US DoD Common Access Card and the US PIV card

## System requirements

- 32-bit and 64-bit editions of Windows 2000, Windows XP, Windows Vista, Windows Server 2003
- 64 MB of RAM minimum
- 150 MB of free disk space

## Related documents

- ActivID™ Card Management System
- ActivIdentity SecureLogin® SSO
- Smart Employee ID
- Secure Information and Transactions
- Strong Authentication
- Enterprise Single Sign On



Technology  
Developer  
Partner



**Entrust® Ready**

**Novell**

**Microsoft**  
GOLD CERTIFIED  
Partner

To find more about  
ActivIdentity solutions and  
products, visit our web site:

[www.actividentity.com](http://www.actividentity.com)

**Americas** +1 (510) 574 0100

**US Federal** +1 (571) 522 1000

**Europe** +33 (0) 1 42 04 84 00

**Asia Pacific** +61 (0) 2 6208 4888

**Email** [info@actividentity.com](mailto:info@actividentity.com)

**ActivIdentity®**